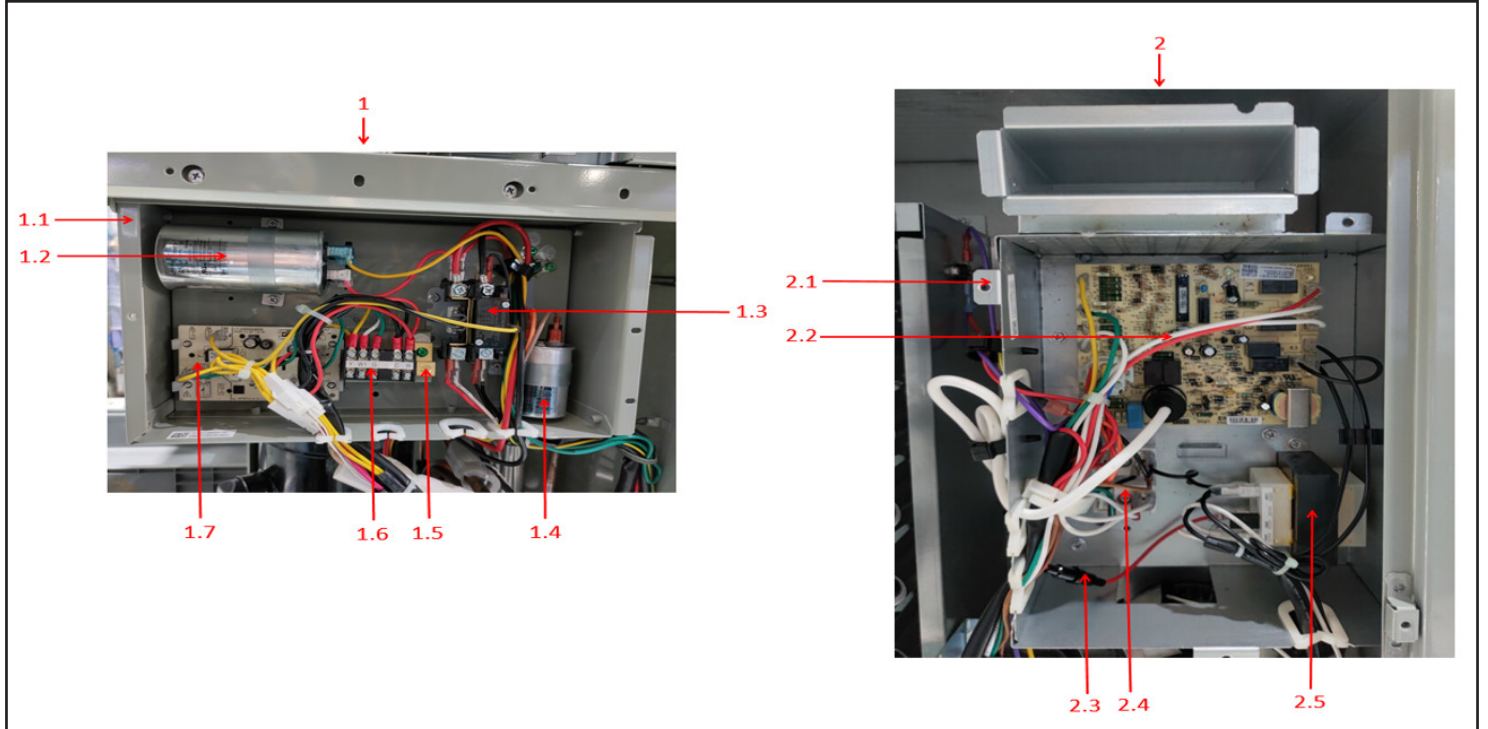
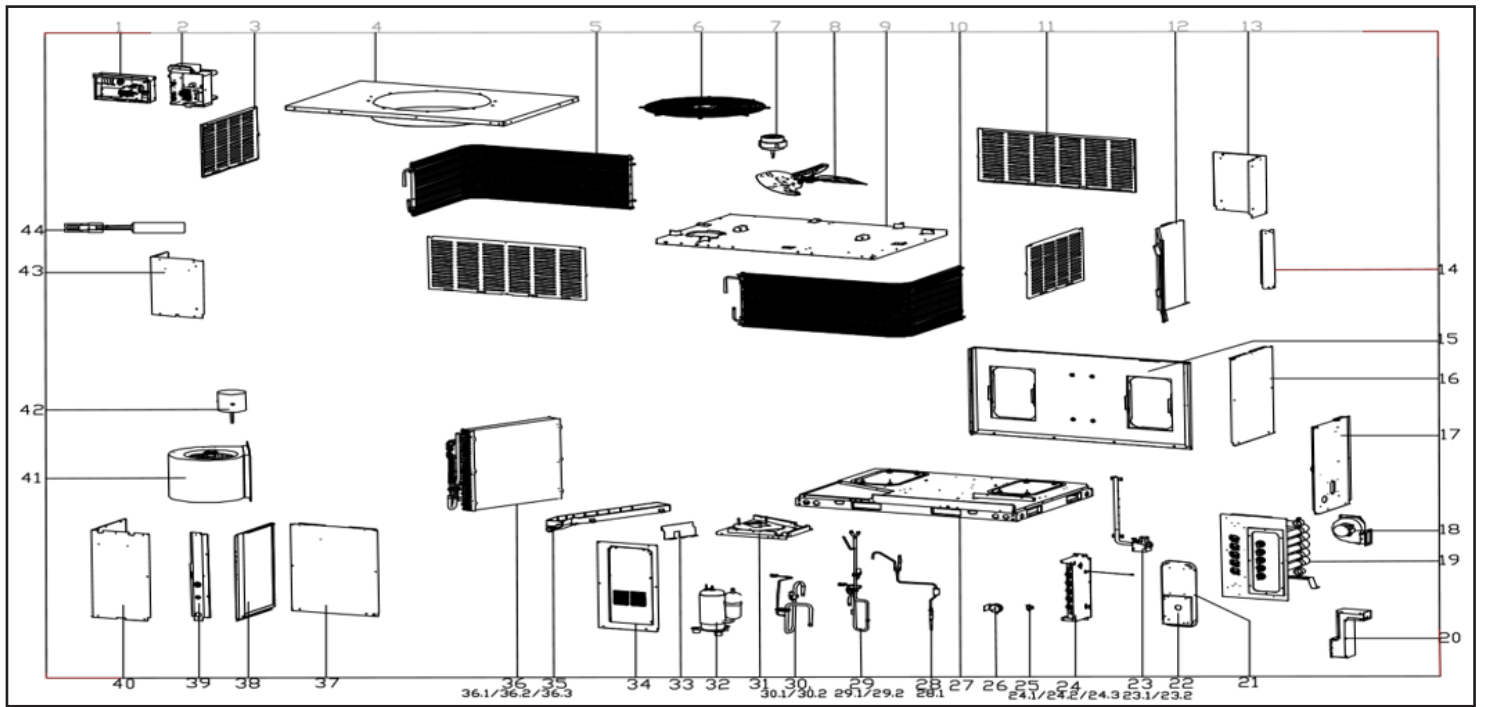

Comfort-Cire® **Century**®
SE Series

Electric Gas Packaged Unit

RGP4290S1A
Parts List



MARS®



Electric Gas Packaged Unit

RGP4290S1A Parts List

EX ID	Spare Parts Code	Part Name(EN)	Qty.	Recommend store spare parts
1	17227700A02473	E-part box assembly	1	
1.1	12227700A08021	Electronic control box body assembly	1	
1.2	17400103000150	Capacitor	1	
1.3	11203502000032	AC contactor	1	YES
1.4	17400103000151	Capacitor	1	
1.5	11201708000008	Wiring Terminal	1	
1.6	17400401001516	Wire joint	1	YES
1.7	17127700001166	Main control board assembly	1	YES
2	17227700001280	E-part box assembly	1	
2.1	12227700010298	Electronic control box body assembly	1	
2.2	17127600000648	Gas furnace, Main control board assembly	1	YES
2.4	17400401000208	terminal block,2P	2	
2.5	11203103000194	Linear Transformer	1	YES
3	12227700A07329	Protective plate assembly	2	
4	12227700A07342	Top cover welding assembly	1	
5	15827700001272	Condenser part	1	YES
6	12927700000341	protection net	1	
7	11002012028483	Single Phase Asynchronous Motor	1	YES
8	12200104000038	Fan	1	YES
9	12227700A08044	Top cover assembly	1	
10	15827700001270	Condenser part	1	YES
11	12227700A07323	Protective plate assembly	2	
12	12227700007504	Partition board assembly	1	
13	12227700A08040	Outer panel	1	
14	12227700008914	Column	2	
15	12227700A07338	Internal panel assembly	1	
16	12227700A07343	Internal panel assembly	1	
17	12227700A07374	Pole 5	1	
18	17400801008424	Exhaust fan ass'y	1	YES
19	15727700000053	Heat-exchanger ass'y	1	
20	12227700007444	Flue pipe welding assembly	1	
21	12227700007209	Gas-collecting hood	1	

EX ID	Spare Parts Code	Part Name(EN)	Qty.	Recommend store spare parts
22	12227700006980	Exhaust baffle	1	
23	15427700002371	Gas Components	1	
23.1	17427600001389	Gas Valve	1	YES
24	12227700010293	Burner ass'y	1	
24.1	17427600001429	Firing pin	1	YES
24.2	17400513000045	Thermostat	1	YES
24.3	11201006000010	Special sensor	1	YES
25	17400513001095	Thermostat	1	YES
26	11201008000027	Pressure sensor	1	YES
27	12227700A08009	Chassis part	1	
28	15427700002366	Throttle assembly	1	YES
28.1	15500210004048	Throttle	1	YES
29	15427700002364	Discharge pipe assembly B	1	
29.1	17400516000628	Pressure controller	1	YES
29.2	15500301000035	meter connector	1	YES
30	15427700002363	Suction pipe assembly	1	
30.1	17400516001088	Pressure switch	1	YES
31	12227700A07369	Compressor base assembly	1	
32	11102010000412	Fixed Speed Scroll compressor	1	YES
33	12227700A08042	Waterproof plate	1	
34	12227700A08041	Outer panel assembly	1	
35	12127700000117	Drainage pan assembly	1	YES
36	15827700001229	Evaporator assembly	1	YES
37	12227700A07321	Internal panel assembly	1	
38	12227700A07340	Internal panel assembly	1	
39	12227700A08014	Column assembly	1	
40	12227700A07334	Panel	1	
41	12200102000175	Centrifugal fan	1	YES
42	11002015011927	Brushless DC Motor	1	YES
43	12227700A08016	Column assembly	1	
44	17400513000070	Discharge Temp. sensor	1	YES

Due to ongoing product improvements, specifications and dimensions are subject to change and correction without notice or incurring obligations. Determining the application and suitability for use of any product is the responsibility of the installer. Additionally, the installer is responsible for verifying dimensional data on the actual product prior to beginning any installation preparations.

Incentive and rebate programs have precise requirements as to product performance and certification. All products meet applicable regulations in effect on date of manufacture; however, certifications are not necessarily granted for the life of a product. Therefore, it is the responsibility of the applicant to determine whether a specific model qualifies for these incentive/rebate programs.



1900 Wellworth Ave., Jackson, MI 49203 • Ph. 517-787-2100 • www.marsdelivers.com

